

SHEET INDEX

SHEET No.	DOCUMENT TITLE	DETAIL No.	DETAIL TITLE	PREV. DETAIL REF.	ISSUE NO.	ISSUE DATE
00	COVER SHEET		SHEET INDEX		-	15/12/2017
01	GULLY PITS	1	STANDARD GULLY PIT WITH LINTEL UP TO 1.8m DEEP	10000 - REV N	-	15/12/2017
		2	GULLY PIT WITH LINTEL UP TO 1.8m DEEP WITH CONCRETE DISH	10030 - REV B		
		3	ROLL KERB GULLY PIT UP TO 1.8m DEEP	10001 - REV J		
02	JUNCTION PITS	1	JUNCTION PIT UP TO 1.8m DEEP	10002 - REV C	-	15/12/2017
		2	LETTERBOX PIT AND GRATED INLET PIT UP TO 1.8m DEEP	10016 - REV E		
		3	STEP IRONS FOR PITS	10004 - REV D		
03	PIPE DETAILS	1	ROLL KERB ROOFWATER OUTLET	10018 - REV A	-	15/12/2017
		2	SUBSOIL DRAINAGE DETAILS	10015 - REV A		
		3	CONCRETE BULKHEAD	10014 - REV C		

This sheet to be read in conjunction with Sheet 00 of each respective Series.

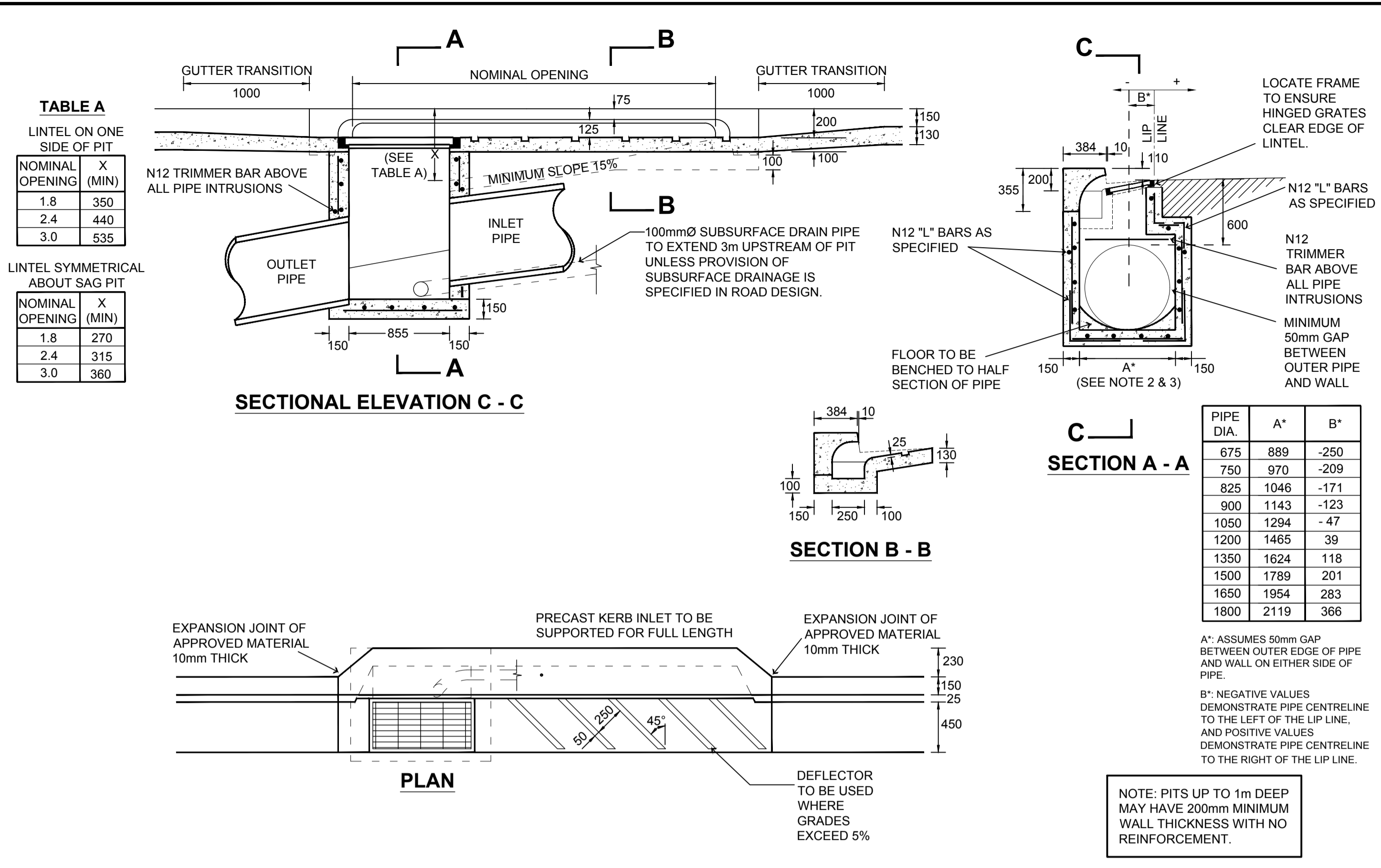
All drawings are owned by Sutherland Shire Council. Issue of AutoCAD drawings must be authorised by Manager of Design Services.



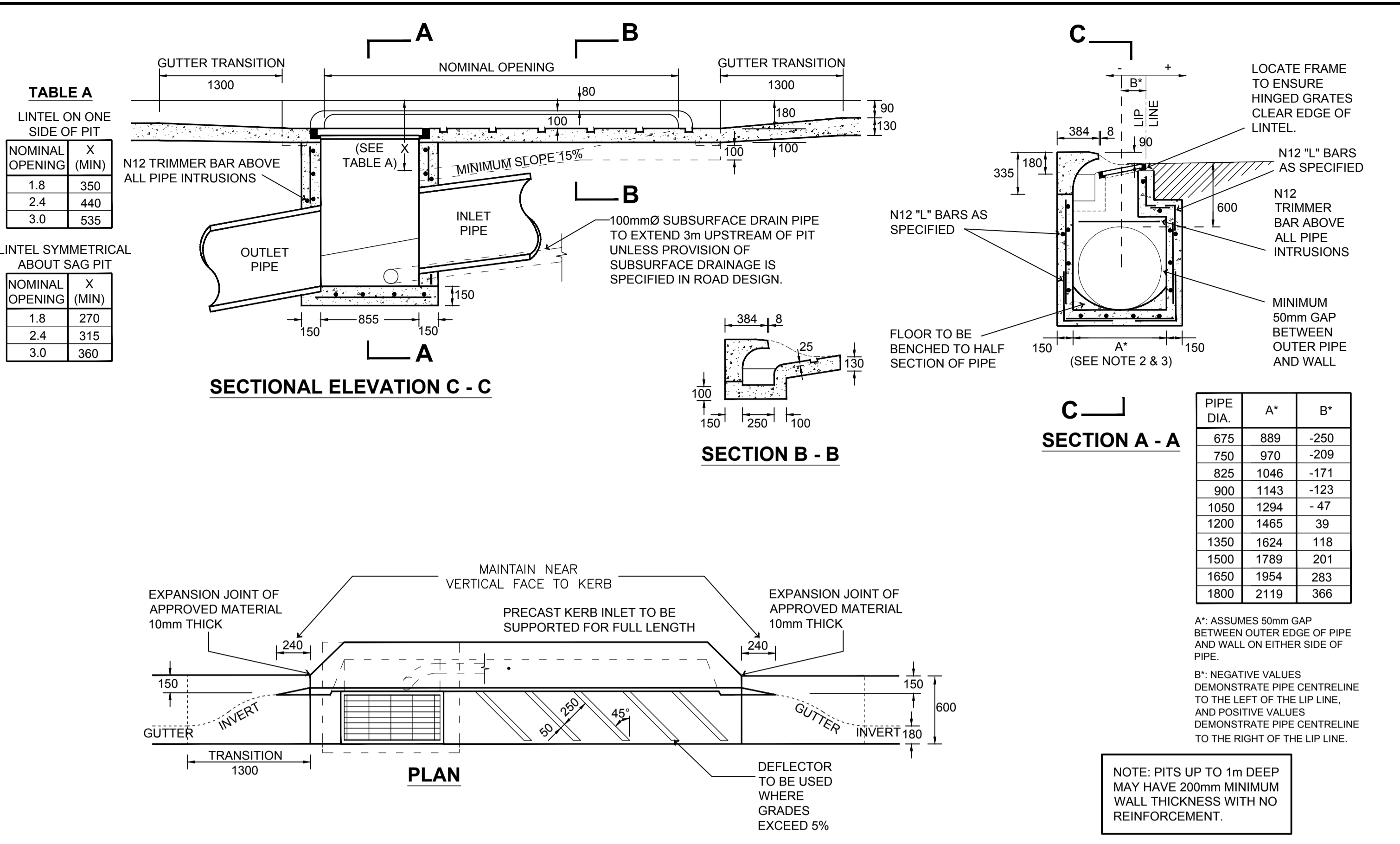
PUBLIC DOMAIN TECHNICAL MANUAL (PDTM)
STANDARD DRAWINGS - STORMWATER & DRAINAGE
COVER SHEET

FOR INFORMATION	CHAPTER No.	SERIES No.	SHEET No.	REV.
PART C	03	00	-	

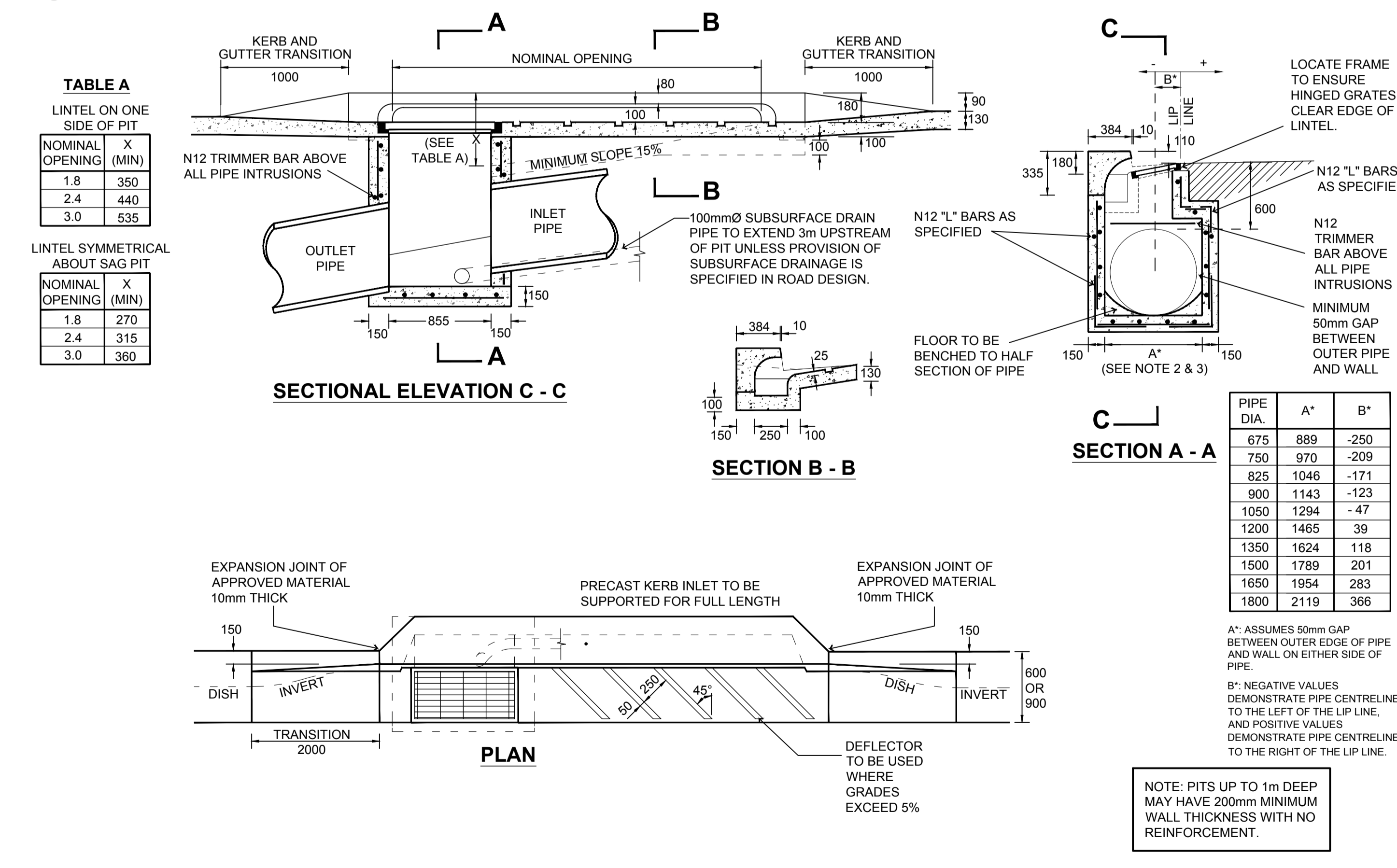
STATUS AND REVISION DESCRIPTION	CHECKED	APPROVED	DATE
- PDTM ORIGINAL ISSUE	G. LUCAS	S. CHAPMAN	15/12/2017



1 STANDARD GULLY PIT WITH LINTEL UP TO 1.8m DEEP
Detail - Scale NTS



3 ROLL KERB GULLY PIT UP TO 1.8m DEEP
Detail - Scale NTS



2 STANDARD GULLY PIT WITH LINTEL UP TO 1.8m DEEP IN CONCRETE DISH
Detail - Scale NTS

NOTES

- STEP IRONS TO BE USED IN ACCORDANCE WITH STANDARD DWG SSC-03-02-3.
- WHERE THE DEPTH OF THE PIT EXCEEDS 1.8m OR THE WIDTH EXCEEDS 780mm, SEPARATE STRUCTURAL DESIGN IS REQUIRED.
- MAXIMUM PIPE SIZE 600 DIA. SEPARATE STRUCTURAL DESIGN REQUIRED FOR LARGER PIPES.
- TO BE USED IN RESIDENTIAL STREETS. SEPARATE STRUCTURAL DESIGN REQUIRED FOR MAIN ROADS, COLLECTOR ROADS AND INDUSTRIAL AREAS.
- ALL PITS TO BE CONSTRUCTED WITH 32MPa CONCRETE AND REINFORCED WITH SL72 MESH CENTRALLY PLACED WITH 800mm LONG N12 'L' BARS AT 400mm CENTRES ON ALL CORNERS.
- ALL EXPOSED EDGES TO BE ROUNDED TO 5mm RADIUS.
- IN VEHICLE AREAS, GRATED INLET PITS SHALL HAVE A HOT DIPPED GALVANISED FRAME AND COVER OR BICYCLE-SAFE GRATE AND "CLASS D" LOADING RATING IN ACCORDANCE WITH A.S.3996.
- IN NON-VEHICLE PEDESTRIAN AREAS, GRATED INLET PITS SHALL HAVE A HOT DIPPED GALVANISED FRAME AND COVER OR HEEL-SAFE GRATE AND "CLASS B" LOADING RATING IN ACCORDANCE WITH A.S.3996.
- ALL GRATES SHALL BE ONE PIECE AND HINGED WITH 80% MINIMUM OPEN AREA.
- GRATES AND COVERS SHALL BE A PROPRIETARY ITEM IN ACCORDANCE WITH AS3996 OR SHALL BE STRUCTURALLY DESIGNED.
- ALL FRAMES TO BE EMBEDDED INTO SURROUNDING CONCRETE AND FINISHED FLUSH WITH THE FINISHED SURFACE LEVELS.

PDTM ORIGINAL ISSUE		G. LUCAS	S. CHAPMAN	15/12/2017
STATUS AND REVISION DESCRIPTION		CHECKED	APPROVED	DATE

This sheet to be read in conjunction with Sheet 00 of each respective Series.

All drawings are owned by Sutherland Shire Council. Issue of AutoCAD drawings must be authorised by Manager of Design Services.

SUTHERLAND SHIRE COUNCIL

PUBLIC DOMAIN TECHNICAL MANUAL (PDTM)
STANDARD DRAWINGS - STORMWATER & DRAINAGE
GULLY PITS

FOR INFORMATION	CHAPTER No.	SERIES No.	SHEET No.	REV.
	PART C	03	01	-

