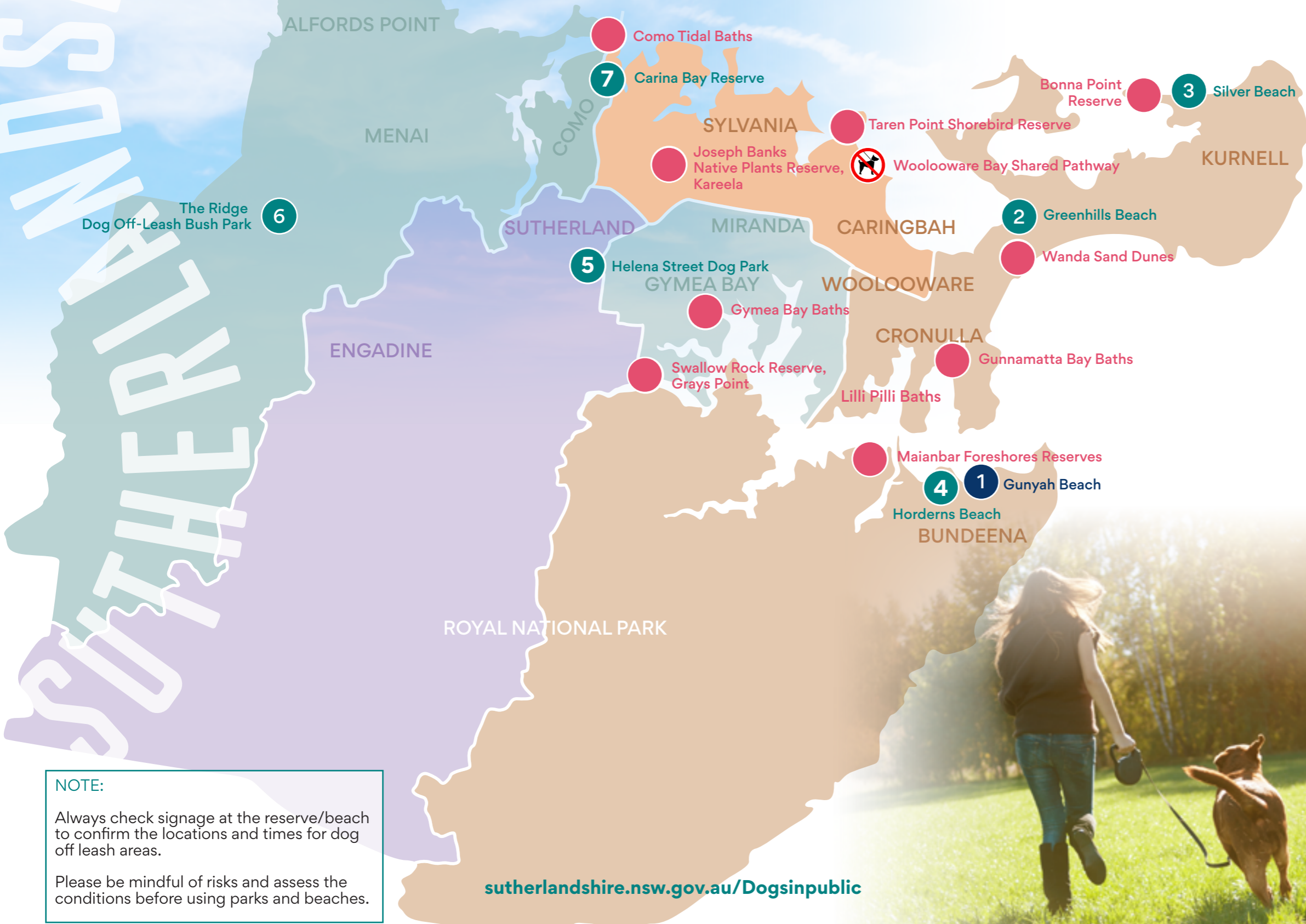


WHERE CAN I TAKE MY DOG IN SUTHERLAND SHIRE?

A handy guide to where you can and can't take your four-legged friend. Remember to be a responsible pet owner. Dogs must be on a leash and under effective control of their owner when in public places, including parks, sports fields, footpaths and bushland. Remember, dogs are not permitted within 10 metres of playgrounds and play equipment.



NOTE:
Always check signage at the reserve/beach to confirm the locations and times for dog off leash areas.
Please be mindful of risks and assess the conditions before using parks and beaches.

sutherlandshire.nsw.gov.au/Dogsinpublic

Dogs On Leash
Gunyah Beach, Bundeena
 Dog on leash walking is permitted most of the year, with restrictions from September to April.
 Dogs On Leash September to April
 Monday-Sunday - before 8.30am and after 4.30pm.
 Dogs prohibited at other times between these months.

Dogs Off Leash
Note: Dogs are prohibited at all beaches unless at the designated dog off leash areas below.
Carina Bay Reserve, Como
 Dogs off leash and horses are allowed in this reserve in certain areas.

Greenhills Beach, Cronulla
 Dogs allowed off leash
 Monday-Sunday - DAYLIGHT SAVINGS-before 10am and after 4pm
 Dogs allowed off leash
 Monday to Sunday - STANDARD TIME -before 10am and after 3pm
 Dogs prohibited at all other times

Helena Street Dog Park, Kirrawee
 Dogs allowed off leash
 At all times. Fenced reserve with areas for large and small breeds.

Horderns Beach, Bundeena
SEPTEMBER TO APRIL
 Dogs allowed off leash
 Monday to Friday before 8.30am and after 4.30pm.
 Dogs allowed on leash
 Monday to Friday 8.30am to 4.30pm.
Prohibited times
 Saturdays, Sundays or any public holidays

MAY TO AUGUST
 Dogs allowed off leash
 Monday to Sunday - all times.

Silver Beach, Kurnell
 Dog allowed off leash area
 Western end of Silver Beach, in front of the Bonna Point Reserve car park.
 Dogs prohibited
 All other areas of Silver Beach.

The Ridge Bush Park, Barden Ridge
 Dogs allowed off leash
 Within the fenced enclosure from 7am to sunset.
 Gates are locked from sunset to 7.00am.

Dogs Prohibited (even if leashed)
 endangered/protected wildlife located in these areas. Dogs are also prohibited at all beaches except for designated dog beaches.

- Woolooware Bay Shared Pathway
- Taren Point Shorebird Reserve
- Wanda Sand Dunes, Cronulla
- Bonna Point Reserve, Kurnell
- Gunnamatta Bay Baths, Cronulla
- Maianbar Foreshores Reserves
- Gymea Bay Baths
- Swallow Rock Reserve, Grays Point
- Joseph Banks Native Plants Reserve
- Como Tidal Baths
- Lilli Pilli Baths